

# OPTOMED AURORA® IQ

Handheld Fundus Camera



**Veterinary Eye Imaging and Documentation**



**PATENTED  
TECHNOLOGY**

Large screen for viewing the results instantly

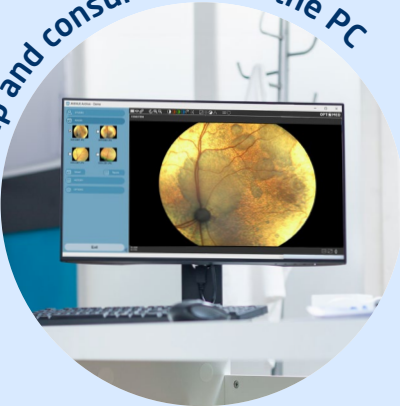


Easy-to-use technology



- Non-mydratiatic operation
- Quick imaging with Smart Autofocus
- Real-time visibility to the retina
- Quiet operation

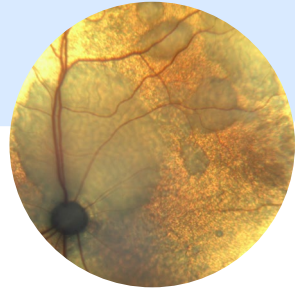
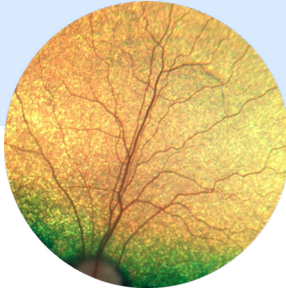
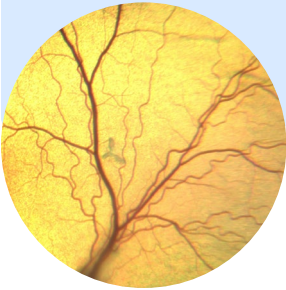
Follow-up and consultation on the PC



.....  
WLAN & USB

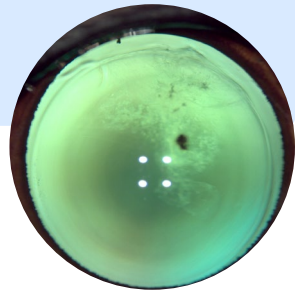
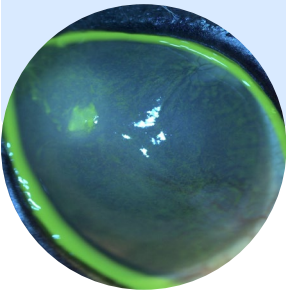
## High-Quality Retinal Imaging

- Detailed examination with 50° FOV
- Clear images with High-Contrast Optical Design



## Eye Surface Lens

- Adjustable illumination levels
- Color imaging and cobalt blue for fluorescein imaging



# Technical Specifications

Type	Non-mydiatic digital fundus camera
Field of view	50 degrees (total FOV 50x40)
Camera sensor resolution	5 Mpix
Optical resolution	> 60 lp/mm (ISO10940:2009)
Fixation targets	9 internal fixation targets for peripheral imaging
Focus modes	Automatic, manual
Minimum pupil size	3.1 mm
Image format	JPEG
Video format	MPEG-4
Display	TFT-LCD: 4", 800x480
Memory	16 GB
Battery	Rechargeable 3.63V/2600mAh Li-ion Battery
Connectivity	WLAN, USB
Type of photography	Color, Red-free, IR
Warranty	2 years excluding batteries
<b>Dimensions and weight:</b>	
Aurora camera	122(w) x 202(h) x 98 (l) mm, 526g
Aurora retinal module	68 (w) x 74 (h) x 160 (l) mm, 327g
Aurora anterior module	71 (w) x 80 (h) x 79 (l) mm, 105g



Optomed Plc

info@optomed.com | [www.optomed.com](http://www.optomed.com) | R3.0 60003188